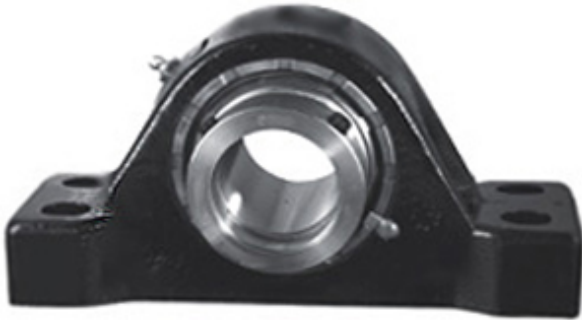




Changzhou Suma Precision Machinery Co...

3.688 Inch | 93.675 Millimeter x 5.969 Inch |
151.613 Millimeter x 4.25 Inch | 107.95 Millimeter
REXNORD ZEP6311F Pillow Block Bearings



ZEP6311F Bearing 2D drawings and 3D CAD models

Bearing No. ZEP6311F

Category	Pillow Block Bearings
Inventory	0.0
Manufacturer Name	REXNORD
Minimum Buy Quantity	N/A
Weight	27.694
EAN	0793699905489
Product Group	M06288
Number of Mounting Holes	4
Mounting Method	Tapered Adapter Sleeve
Housing Style	4 Bolt Pillow Block
Rolling Element	Spherical Roller Bearing
Housing Material	Cast Iron
Expansion / Non-expansion	Non-expansion
Mounting Bolts	3/4 Inch
Relubricatable	Yes
Insert Part Number	6311U
Seals	Clearance Seal
Housing Configuration	1 Piece Solid
Inch - Metric	Inch
Other Features	Double Row
Long Description	4 Bolt Pillow Block; 3-11/16" Bore; 4-1/4" Base to Center Height; Tapered Adapter Sleeve Mount; Spherical Roller Bearing; 12" Minimum Bolt Spacing; 13"



Changzhou Suma Precision Machinery Co...

	Bolt Spacing Maximum; Relubr
Category	Pillow Block
UNSPSC	31171511
Harmonized Tariff Code	8483.20.40.80
Noun	Bearing
Keyword String	Pillow Block
Manufacturer URL	http://www.rexnord.com
Manufacturer Item Number	ZEP6311F
Manufacturer Internal Number	190548
Weight / LBS	65.5
d	3.688 Inch 93.675 Millimeter
Bolt Spacing Minimum	12 Inch 304.8Millimeter
Actual Bolt Center to Center	0 Inch 0Millimeter
B	4.25 Inch 107.95 Millimeter
Nominal Bolt Center to Center	12.5 Inch 317.5 Millimeter
D	5.969 Inch 151.613 Millimeter
Bolt Spacing Maximum	13 Inch 330.2Millimeter